




Acme Sanitary Ware Co. Ltd.

1/F, Acme Building, 22-28 Nanking Street, Kowloon, Hong Kong
Tel: 2388 7171 Fax: 2710 8012
Email: acme@acmesanitary.com.hk
Website: www.acmesanitary.com.hk

American Standard

PROJECT		REF		REV	ITEM CODE	
LOCATION		DATE			PAGE	

SANITARY WARE SPECIFICATION SHEET

Item Descriptions	American Standard (PRC) "Acacia Evolution" Extended basin mixer with ECO handle and click technology to save water and energy; nominated flow rate 7 L/min in WELS Grade 1 ; Registration No. TM 18-0217	<div>Illustration/ Drawing</div> 
Dimensions	L151 x W44 x H291 mm	
Model	CF-1302.101.50	
Material/Finish	Brass / Chrome Plated	
Manufacturer	American Standard (PRC)	
Source	Acme Sanitary Ware Co. Ltd Mr. Eric Wong/ Mr. Don Yuen	
Contact Tel/Fax	(852) 2388-7171 / (852) 2710-8012	
E-mail	acme@acmesanitary.com.hk	
Website	www.acmesanitary.com.hk	

- **Water Saving:** Conserving water is as important to us as it is to you. It makes ecological and economical sense. After all, the less water you use, the better future we have.
- **Ceramic Disc Cartridge:** American Standard patents its ceramic disc valve technology which keeps faucets drip-free with smooth handle performance for a lifetime of use.
- **Design Philosophy:** American Standard products are designed to express the uniqueness of your personality. Our design philosophy focuses on total relaxation, maximum utility and technological innovations.



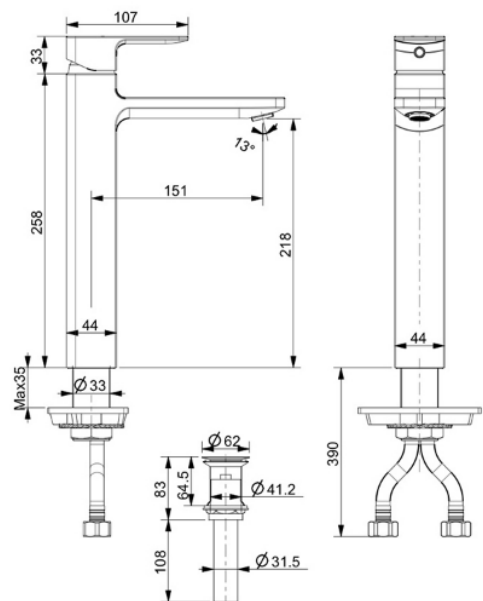
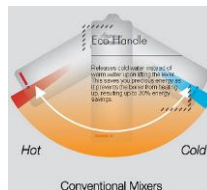
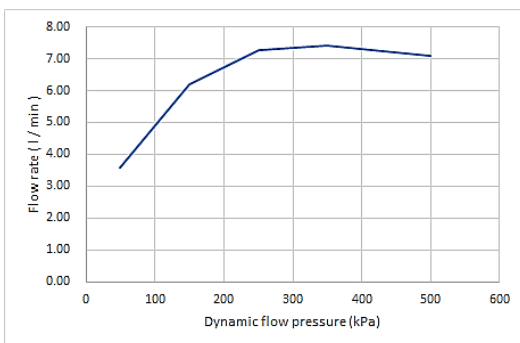
PROVIDES UP TO 30% ENERGY SAVINGS

Unlike conventional mixers, Acacia Evolution's Eco Handle releases cold water instead of warm water upon lifting the lever. This saves your precious energy as it prevents the boiler from heating up, resulting up to 30% energy savings. To get hot water, you only need to move the lever to the left.



PREVENTS WATER WASTAGE

By providing a resistance midway when lifting the lever, this technology gives you better water volume control, saving you precious water.



Dynamic flow pressure (kPa)	50	150	250	350	500
Flow rate (l/min)	3.60	6.20	7.28	7.40	7.10

Note: Equivalent to WF-1302.101.50 / FFAS1302-101500BC0

* All information of the above is for the reference only. No prior notice is made if any changes.

註冊號碼 (Registration No.): TM 18-0217




自願參與用水效益標籤計劃 - 水龍頭
Voluntary Water Efficiency Labelling Scheme - Water Taps



茲證明
This is to certify that

將下列水龍頭在本計劃內註冊：
has registered the following water tap under this scheme :

牌 子 / Brand	:	American Standard
型 號 / Model	:	CF-1302.101.50
種 類 / Type	:	Mixing
原產地 / Country or Region Origin	:	China

在用水效益標籤上展示的標誌 <i>Symbolic Presentation on the Water Efficiency Label</i>	:		滴水點 <i>Water droplet(s)</i>
用水效益級別 <i>Water Efficiency Grade</i>	:	1	
耗水量 <i>Water Consumption</i>	:	7	公升/分鐘 <i>litres/minute</i>

簽發日期: 14 August 2018
Date of Issue:



水務署
Water Supplies Department



水務署署長(鍾兆榮代行)
for Director of Water Supplies



電子郵遞
e-mail wsdinfo@wsd.gov.hk

圖文傳真
Facsimile 2824 0578

檔 號
Reference (4) in WSD 3321/18 Pt.1 T/J(13)

7 March 2018



Approval of "AMERICAN STANDARD" Single Lever Mixers

Your letter ref. WRC/1561 dated 22 December 2017 and subsequent submission received by this department on 23 February 2018 refer.

Having considered the test report ref. J21696A issued on 5 December 2017 by Nutek Systems (HK) Ltd., this Authority accepts that the fittings described below comply with, and their use when correctly installed does not contravene, the Waterworks Ordinance and Regulations.

Name of Manufacturer: American Standard

Country of Origin: China

Brand: American Standard

Details of Fitting: 1/2" Single lever mixer

Model: CF-1302.101.50
WF-1302.101.50

Body Markings: *American Standard*

Expiry Date:

24 October 2022

This Authority hereby permits the use of the above fittings in fresh water plumbing systems subject to full adherence to Waterworks installation requirements. In particular, you are required to draw your customers' attention to the following requirement-

"The cold water supply to the fittings shall be drawn from the same source that supplies the hot water apparatus so as to provide a balanced pressure and to obviate the risk of scalding in the event of a restriction or failure in the water supply."

A condition of this acceptance is that the fittings to be installed shall be replicas of the samples as certified by the testing agent mentioned above and without modifications. This acceptance may be withdrawn at any time if the standard of the fittings installed fails to meet that of the approved samples or if the fittings are found to be unsuitable for use in fresh water plumbing systems.

This acceptance is only applicable to the main body of the fittings, unless other specified.

For the use of the fittings in any project, the Acceptance Reference Number at the bottom of this letter must be quoted as a means of identification of acceptance of the fittings by this Authority.

Should you have any enquiries, please contact our Engineer Mr. Terry KUNG at tel. no. 3583 4086.

Yours faithfully,



(CHAN Chung Kun)
for Water Authority

c.c. WSD 3321/1/82] - without catalogue
 ME/MC] - with soft copy only